

## EisBaer EisTouch HI 6G – 10" Touchpanel with PoE



### Specification:

- Fanless Design, compact and maintenance free
- Intel® Celeron N6211 (up to 3.0GHz)
- Intel® HD Graphics
- 4GB RAM
- 128 GB (M.2 SSD)
- OS: Windows 11 IoT Enterprise
- 10,1" Display 1280 x 800 Pixel
- Power supply: **PoE IEEE 802.3at** from 25Watt  
PoE support condition: Use without other power consuming devices
- 2x USB 3.2
- 2x 2.5GigaLAN RJ45 (1x Ethernet, 1x PoE-Ethernet)
- 1x RS 232/422/485 (Default: RS485)
- 1x internal speaker 1W
- 1x Power supply via 12 VDC external
- Operational temperature: 0°C ~ 50°C
- Humidity: 0 ~ 90%, not condensing
- Front: IP65
- Size-Display (W x H x D): 264,5 x 173,29 x 35,7\*mm - includes display frame: 13mm
- Optional: EisTouch 6G - FM-wallbox (254 x 163 x 54 mm)
- Optional: EisTouch 6G - Mounting kit for hollow wall mounting
- Optional: EisTouch 6G – KNX-Interface
- Optional: EisTouch 6G - Cavity wall mounting kit
- Optional: EisBaer HI-Server 4.0 NT (Power supply)
- Optional: EisBaer Hardware license with 10 pages / 200 components/channel
- Optional: EisBaer Hardware license with 20 pages / 400 components/channel



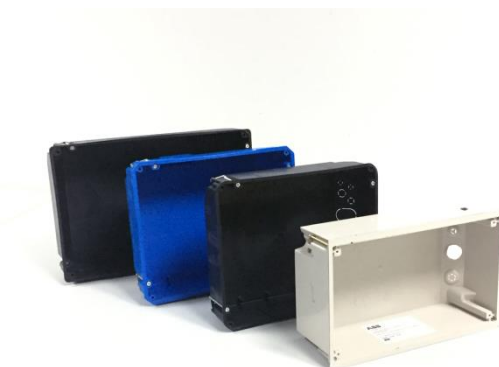
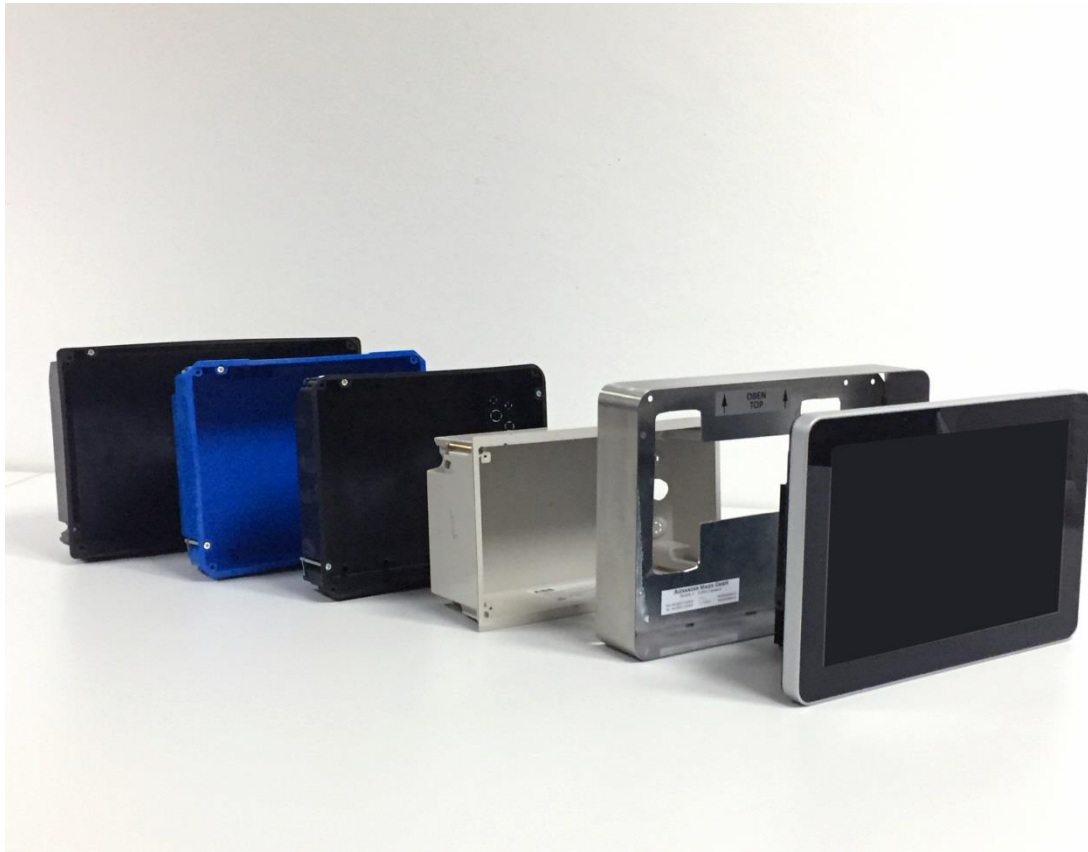
*Flush-mounted housing*

**Please note: The touch panel 6G does not have a microphone and therefore it can not be used as a door intercom indoor station.**

Special surface-mounted frame made of stainless steel for replacing existing panels from third-party manufacturers. The flush-mounted housing of the previous touch panel can remain in place.

You can currently replace the following variants with our EisTouch 6G surface-mounted frame

- MT701
- Control Panel
- Comfort Panel
- Smart Panel



*Existing flush-mounted housings*



*EisTouch 6G in surface mounting frame*

**Cut-out dimensions (flush-mounted housing - 10" EisTouch 6G):**

Width: 254 mm (B) Height: 163 mm (A) Depth: 54 mm (C)  
Surrounding support edge: 3mm per side



**Optional accessories for flush-mounted housing - 10 "EisTouch 6G:**

- Cavity wall mounting kit

